

## Tech Tip 140036

### VIGIL Client – Optimal Settings for Low-Bandwidth Environments

<b>Tech Tip #:</b>	140036-2
<b>Revised:</b>	August 29, 2015
<b>Product Affected:</b>	VIGIL Client
<b>Purpose:</b>	The purpose of this document is to provide VIGIL users with the optimal VIGIL Client settings for operating in low bandwidth environments.

<b>1</b>	<b>INTRODUCTION.....</b>	<b>1</b>
<b>2</b>	<b>OPTIMAL SETTINGS FOR LOW-BANDWIDTH ENVIRONMENTS .....</b>	<b>2</b>
2.1	Live Settings .....	2
2.2	Playback Settings.....	3
<b>3</b>	<b>CONTACT INFORMATION .....</b>	<b>3</b>

#### 1 Introduction

The VIGIL VMS suite is a versatile and comprehensive set of video management tools which has been engineered with a variety of field applications and network environments in-mind.


Low bandwidth environments have historically proven difficult for the successful application of surveillance networks, but with VIGIL’s versatile feature set and multiple low-bandwidth-friendly options, VIGIL performs with efficiency and ease, regardless of network bandwidth constraints. .


As one of the cornerstone products of the VIGIL VMS suite, VIGIL Client, 3xLOGIC’s remote desktop client, can be configured to connect to nearly any network, regardless of capacity and speed. This guide has been constructed to provide VIGIL users with optimal settings for connecting to a VIGIL Server on a low-bandwidth network using VIGIL Client.

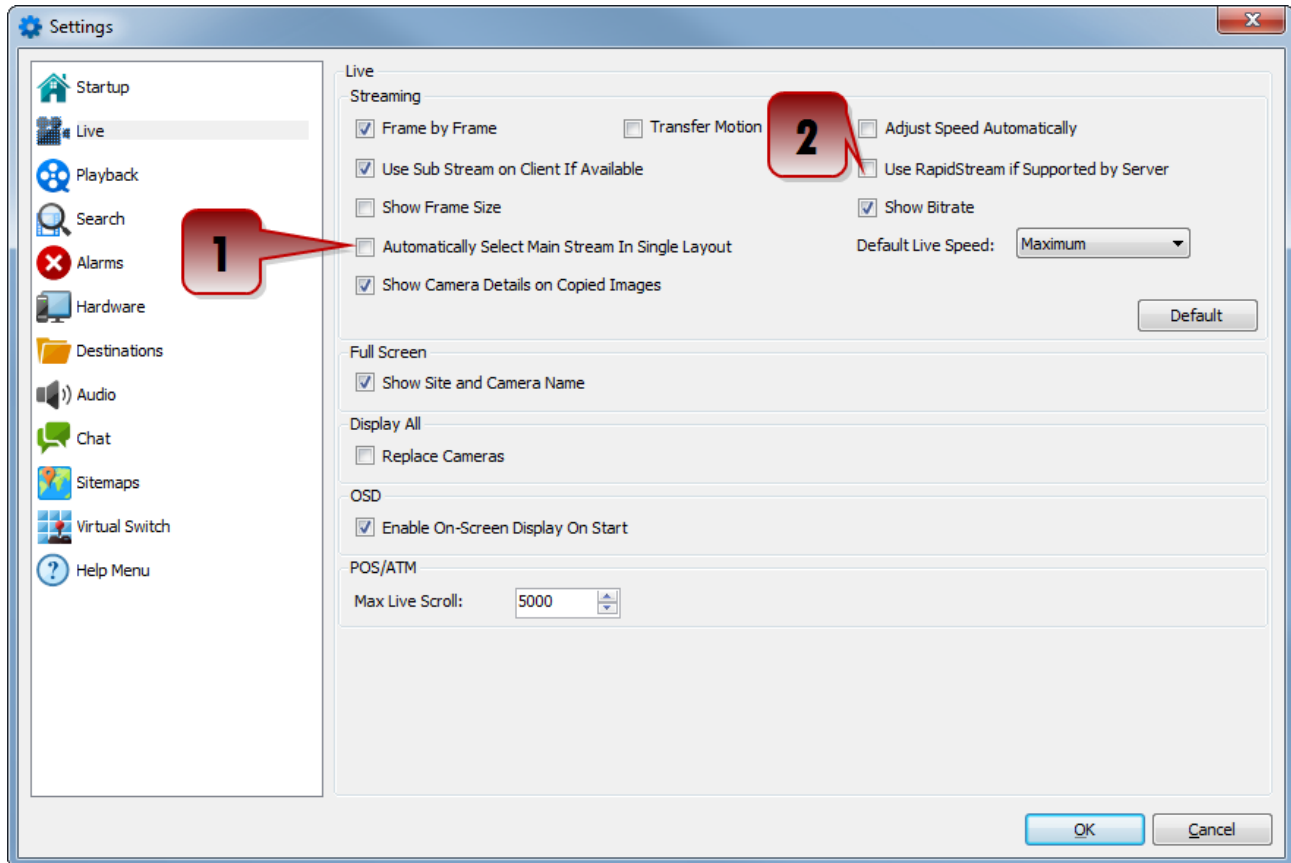
## 2 Optimal Settings for Low-Bandwidth Environments

Featured in the following section are screenshots featuring the recommended settings for optimal operation of VIGIL Client when connecting to a low-bandwidth environment.

### 2.1 Live Settings

Navigate to the VIGIL Client *Settings* window by clicking the  button in the icon menu toolbar.

Click the  icon to open the *Live* settings window.




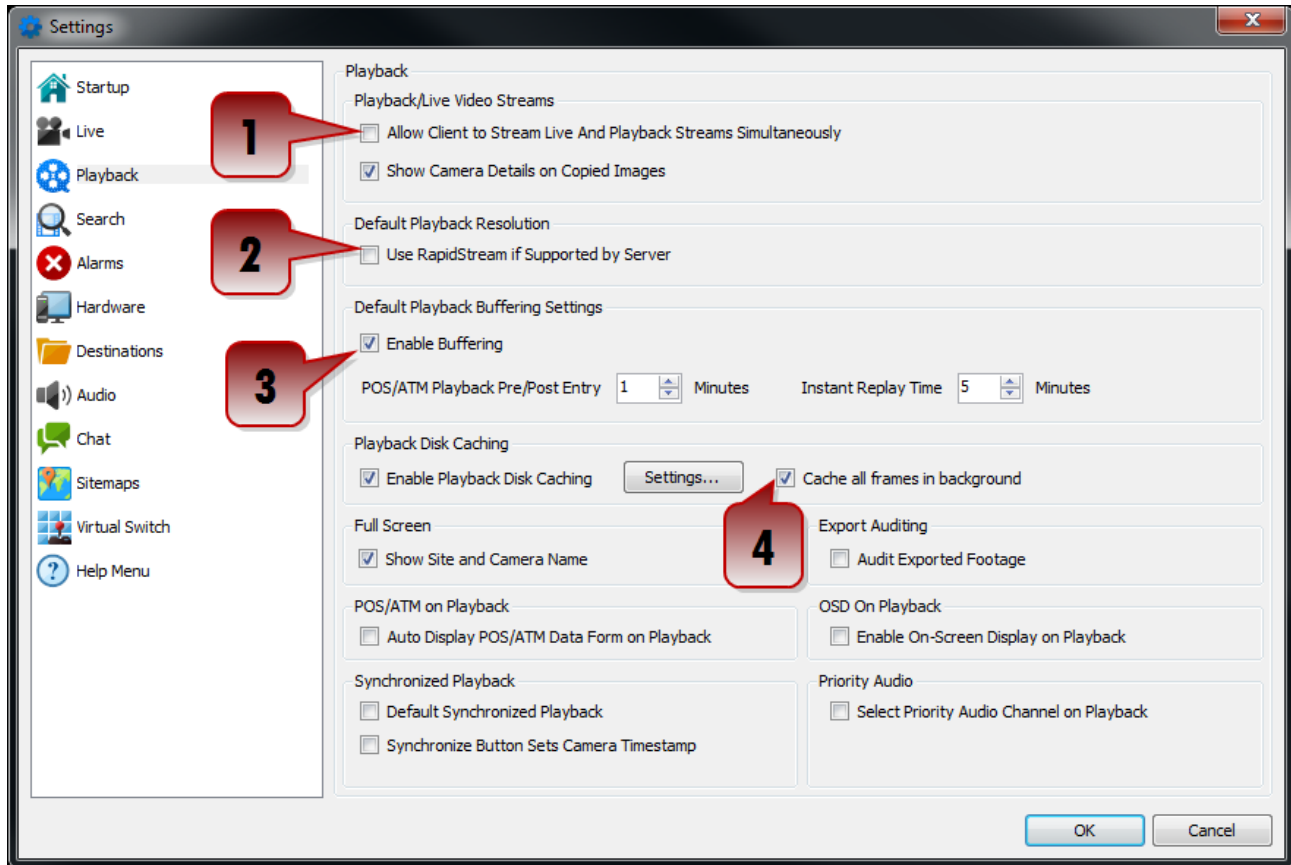
1. Disable the *Automatically Select Main Stream in Single Layout* option.
2. Disable the *Use RapidStream if Supported by Server* option.

Although the highlighted options above are considered the most important setting in regards to low-bandwidth environments, using the other pictured settings is still advised.

## 2.2 Playback Settings

Navigate to the VIGIL Client *Settings* window by clicking the  button in the icon menu toolbar.

Click the  *Playback* icon to open the *Playback* settings window.



1. Disable the Allow Client to Stream Live and Playback Simultaneously option.
2. Disable the Use RapidStream if Supported by Server option.
3. Enable Buffering.
4. Enable the *Cache all Frames in Background* option.

Although the highlighted options above are considered the most important setting in regards to low-bandwidth environments, using the other pictured settings is still advised.

## 3 Contact Information

If you require more information, or if you have any questions or concerns, please contact 3xLOGIC Support:

Email: [helpdesk@3xlogic.com](mailto:helpdesk@3xlogic.com)

Online: [www.3xlogic.com](http://www.3xlogic.com)