

## VISIX™ 2MP IP Outdoor Infrared Heated Dome Camera

This rugged two (2) megapixel IP outdoor vandal dome camera is the perfect combination of form and function. With its infrared LEDs and its heated enclosure the VX-2M-OD2-RIAH delivers high-definition video for network video surveillance applications requiring superior clarity and detail in varying lighting and weather conditions.

The IP66-rated enclosure provides protection in the harshest environments for superior dust and water resistance. Durable and aesthetically pleasing, this vandal dome camera allows for easy installation in a wide variety of areas. Designed to continue functioning at top performance at temperatures as low as -40°C (-40°F) and as high as 60°C (140°F), this cameras heater and fan allows for a wide range of applications.

A true day/night camera for use in low-light conditions down to 0 lux (with IR). The standard IR cut filter with auto switch, provides superior night-time video. Triple streaming allows recording at the highest quality while allowing fast live viewing from anywhere in the world regardless of available bandwidth. Full support for both variable-bit-rate and variable-frame-rate, allows the quality of each stream to be matched to available bandwidth for the most effective video quality possible.

When coupled with the VIGIL™ Series of digital video recorders and Video Management System (VMS) software, superior point-to-point hardware compression and decompression allows for maximum performance of streamed live video providing better video quality, more concurrent streams and a lower overall consumption of CPU performance.

This high-definition camera is packed with all the features you might need for nearly any application including: motion detection; low-light day/night functionality; NAS compatibility and onboard SD, SDHC or SDXC up to 64GB; and compatibility with a wide variety of standardized network protocols.

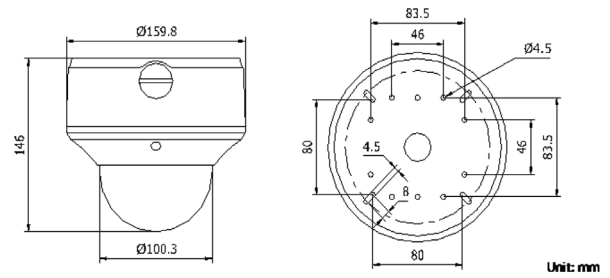


### Key Features and Benefits

<b>Resolution</b>	2 MP (1920 x 1080)
<b>Frame Rate</b>	30 fps
<b>Compression</b>	H.264/MJPEG/ MPEG4
<b>Lens</b>	2.8-12mm Varifocal
<b>Remote Focus</b>	✓
<b>WDR</b>	Digital
<b>Audio</b>	Two-way
<b>On-Camera Storage</b>	Micro SD/ SDHC/SDXC, up to 64GB
<b>Built-in IR</b>	up to 30 m
<b>Outdoor</b>	IP66
<b>ONVIF/PSIA Compliant</b>	✓
<b>Warranty</b>	3-Year

## CAMERA

<b>Image Sensor:</b>	1/2.8 inch Progressive Scan CMOS
<b>Lens:</b>	2.8 ~ 12mm, F1.4 (Motorized Varifocal)
<b>Angle of View:</b>	113° ~ 33.8°
<b>Angle Adjustment:</b>	Pan: 0° ~ 355°, Tilt: 0° ~ 75°, Rotation: 0° ~ 355
<b>Remote Focus:</b>	Yes
<b>Min. Illumination:</b>	0.02 Lux / F1.2 with Auto Gain Control 0.027 Lux / F1.4 with Auto Gain Control 0 Lux with IR
<b>IR Range:</b>	Up to 30 Meters
<b>Electronic Image Stabilization:</b>	Supported
<b>Day/Night:</b>	IR cut filter with auto switch
<b>Wide Dynamic Range:</b>	Digital
<b>Shutter Times:</b>	1 second to 1/100,000 seconds



## COMPRESSION STANDARD

<b>Video Compression:</b>	H.264, MPEG-4, MJPEG
<b>Video Bit Rate:</b>	32 Kbps ~ 16 Mbps
<b>Audio Compression:</b>	G.711, G.726
<b>Dual Streams:</b>	Yes

## IMAGE

<b>Max. Image Resolution:</b>	1920(H) x 1080(V)
<b>Frame Rate:</b>	30 fps (1920x1080) 30 fps (1280x960) 30 fps (1280x720)

## FUNCTIONS

<b>Alarm Triggers:</b>	Intrusion detection, Defocus detection, Motion detection, Face detection, Dynamic analysis, Tampering alarm, Network disconnect, IP address conflict, Storage exception
<b>SD Card Local Recording:</b>	1 slot (SD, SDHC, SDXC) up to 64GB
<b>Security:</b>	User Authentication, Watermark, IP address filtering, anonymous access, reset
<b>Protocols:</b>	TCP/IP, HTTP, DHCP, DNS, DDNS, NTP, RTP, RTSP, PPPoE, SMTP, SNMP, HTTPS, FTP, ICMP, UPnP, IGMP, 802.1X, QoS, IPv6, Bonjour (SIP optional)
<b>System Compatibility:</b>	ONIF, PSIA, CGI

## PHYSICAL

<b>Working Temperature:</b>	-30°C ~ 60°C (-22°F ~ 140°F); Humidity 95% max -40°C ~ 60°C (-40°F ~ 140°F) with heater
<b>Weather protection:</b>	IP66
<b>Impact Protection:</b>	IEC60068-2-75Eh, 50J; EN50102, up to IK10
<b>Dimensions (inches):</b>	6.29" x 5.75"
<b>Dimensions (mm):</b>	159.8 x 146
<b>Weight:</b>	4.62 lbs / 2100 g

## ELECTRICAL

<b>Power Supply:</b>	24VAC ± 10%; PoE (802.3af)
<b>Power Consumption:</b>	13w

## INTERFACE

<b>Communication:</b>	1 RJ45 10M/100M Ethernet port, 1 RS-485 interface
<b>Video Output:</b>	1Vp-p Composite Output (75 Ω, BNC)
<b>Alarm Input:</b>	2
<b>Alarm Output:</b>	2
<b>Audio Input:</b>	1 - Mic in/Line in.
<b>Audio Output:</b>	1 - Line Out

## WARRANTY

Three (3) Year Parts and In-house Labor Warranty

## CERTIFICATIONS

FCC, CE

## PART NUMBER

**VX-2M-OD2-RIAH:** VISIX 2MP IP Camera - Outdoor Dome

## RECOMMENDED MOUNTS

<b>VX-PM-OD2:</b>	Pendant Mount Adaptor
<b>VX-WM-OD2:</b>	Wall Mount Adaptor
<b>VX-POLE:</b>	Pole Mount Adaptor
<b>VX-CM:</b>	Corner Mount Adaptor
<b>VX-WMJ-OD2:</b>	Wall Mount Adaptor with Junction Box