

## Tech Tip 180010

### VIGIL Client – Understanding Bandwidth Test Results

<b>Tech Tip #:</b>	180010-2
<b>Revised:</b>	March 28th, 2018
<b>Product Affected:</b>	VIGIL Client 10.5 and newer
<b>Purpose:</b>	This document is intended to aid the reader in interpreting and understanding VIGIL Client Bandwidth Test results in VIGIL Client 10.5 and newer.

1	VIGIL CLIENT BANDWIDTH TEST .....	1
2	UNDERSTANDING BANDWIDTH TEST RESULTS .....	2
3	CONTACT INFORMATION .....	2

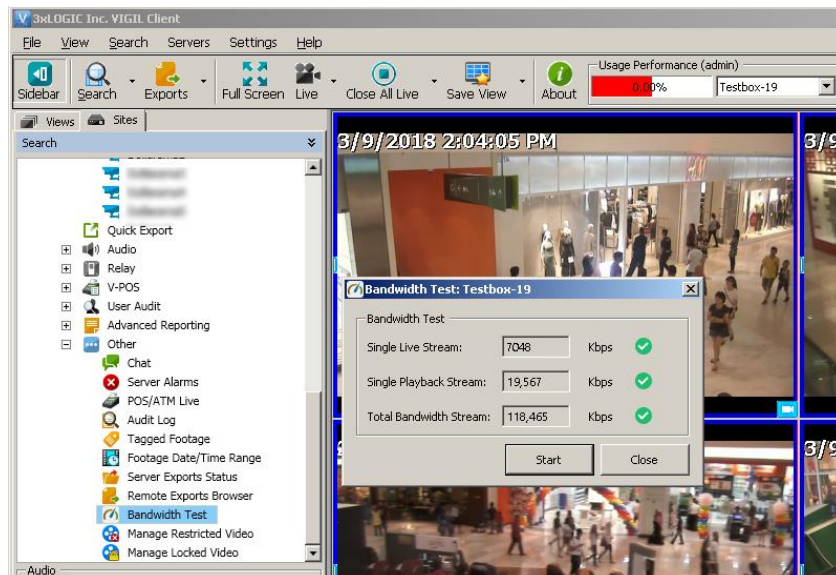
#### 1 VIGIL Client Bandwidth Test

The Bandwidth Test feature is a simple utility to check average bandwidth availability between VIGIL Client and the selected VIGIL Server site and will notify a user if an insufficient bandwidth issue exists.

The test will produce separate bandwidth availability averages for the following three stream criteria:

- **Single Live Stream** - The average amount of available bandwidth for a single camera live stream.
- **Single Playback Stream** - The average amount of available bandwidth for a single camera playback stream.
- **Total Bandwidth Stream** - The total available bandwidth average.





Double-click the *Bandwidth Test* option in the treewiew to open the utility.



## 2 Understanding Bandwidth Test Results

Click Start to begin the test.

When the test has begun, progress will be indicated via the gauge icons. Available bandwidth averages will be listed in the corresponding fields (kbps).

	The HIGH icon indicates ample bandwidth exists for the corresponding stream criteria.
	The MED icon indicates sufficient bandwidth exists for the corresponding stream criteria.
	The LOW icon indicates the minimum amount of recommended bandwidth exists for the corresponding criteria.
	The FAIL icon indicates an insufficient bandwidth issue.

Bandwidth ranges are graded below:

	Low	Med	High
<b>Single Live Stream</b>	250Kbps – 2048Kbps	2048Kbps – 50000Kbps	50000Kbps or more
<b>Single Playback Stream</b>	250Kbps– 2048Kbps	2048Kbps – 50000Kbps	50000Kbps or more
<b>Total Bandwidth Stream</b>	512Kbps – 3048Kbps	3048Kbps – 70000Kbps	70000Kbps or more

- **LOW** - The system will work but you will most likely not be able to stream video in real time and playback will be very slow.
- **MED** - The system will function but viewing more than one camera in live mode and playback will be noticeably slow.
- **HIGH** - The system will be able to stream multiple cameras in real time as well as multiple cameras on playback.

## 3 Contact Information

If you require more information, or if you have any questions or concerns, please contact 3xLOGIC Support:

Email: [helpdesk@3xlogic.com](mailto:helpdesk@3xlogic.com)

Online: [www.3xlogic.com](http://www.3xlogic.com)