

## VIGIL™ CENTRAL MANAGEMENT (VCM) 9.0

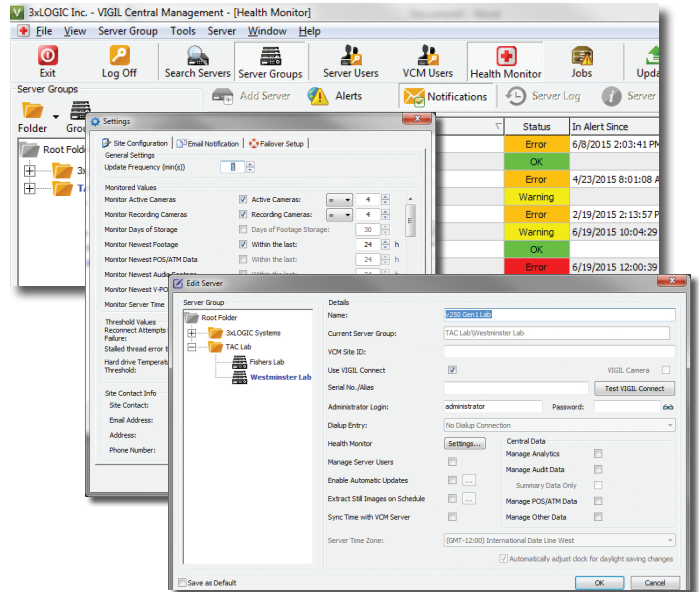
VIGIL Central Management (VCM) provides the ability to monitor the status of VIGIL Servers and V-Series cameras. Designed with the integrator in mind, VCM allows you to proactively inform your end users of any potential health concerns with their VIGIL Servers or cameras.

Every integrator has had to have that awkward conversation: “We’re sorry, but we don’t have video of the incident because the camera has been down for a month.” With VCM, you will know when the status of a customer’s VIGIL Server or cameras change, allowing you to take immediate action to resolve any potential issues. Created to add value in any scenario, VCM can be deployed for a single, enterprise-level project or can manage thousands of single or multi-location end users on the same system.

VCM can reside anywhere: physical or virtual server; inside or outside of an end-user firewall; or, new in VIGIL 9.0, hosted by 3xLOGIC in the cloud.

### Features

- Monitor the health of your 3xLOGIC VIGIL appliances:
  - ▶ CPU utilization
  - ▶ Number of active cameras
  - ▶ Video footage data ranges
  - ▶ Storage capacity and days of video storage
- Remotely deploy software updates and configuration changes
- Centrally control Server users and their permissions on any or all connected Servers
- Dynamically populate VIGIL Client’s Server list
- Receive warning notification on system health through VCM Client or via text/email
- Pull camera snapshots to check field of view without logging into every Server and camera
- Backup and store Server configuration files
- Host VCM on a local or remote physical server, virtual machine, or 3xLOGIC cloud



### Minimum System Requirements for VCM Server

<b>OS:</b>	Windows Server 2008 or 2012 Windows 7 or 8
<b>CPU:</b>	Intel® Core™ i3 Processor
<b>RAM:</b>	2 GB
<b>Hard Drive Space:</b>	500 GB HDD

### Minimum System Requirements for VCM Client

<b>OS:</b>	Windows Server 2008 or 2012 Windows 7, 8 or 10
<b>CPU:</b>	Intel® Core™ i3 Processor
<b>RAM:</b>	1 GB
<b>Hard Drive Space:</b>	40 GB HDD

### Part Number

<b>VGL-VCM-Server:</b>	Server-based VCM
<b>VGL-VCM-H:</b>	Hosted VCM
<b>VGL-VCM-H-MIN:</b>	Base Hosted VCM