

Tech Tip 170021

3xLOGIC Camera (VSXIP) Setup Utility – Camera Activation Feature

Tech Tip #:	170021-1
Date:	May 16th, 2017
Product Affected:	3xLOGIC Camera (VSXIP) Setup Utility v9.50.0300 or later.
Purpose:	This document is intended to instruct a user on utilizing the 3xLOGIC Camera Setup Utilities' <i>Camera Activation</i> feature.

1 INTRODUCTION.....1

2 3XLOGIC CAMERA (VSXIP) SETUP UTILITY - CAMERA ACTIVATION1

3 CONTACT INFORMATION2

1 Introduction

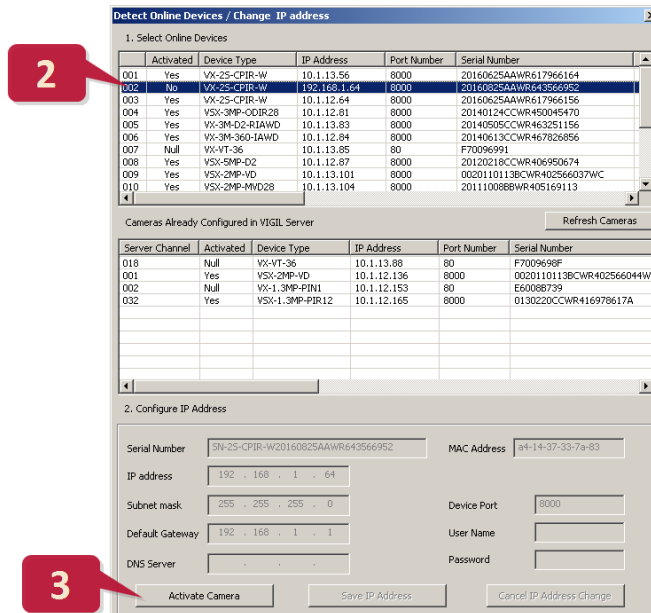
As of v9.50.0300 of the 3xLOGIC Camera Setup Utility (also known as the *VSXIP Setup Utility*), users can activate and assign custom login credentials to non-activated VISIX IP cameras using the 3xLOGIC Camera Setup Utility.

Please read through the remaining sections of this guide for instructions on using the 3xLOGIC Camera Setup Utilities' Camera Activation feature.

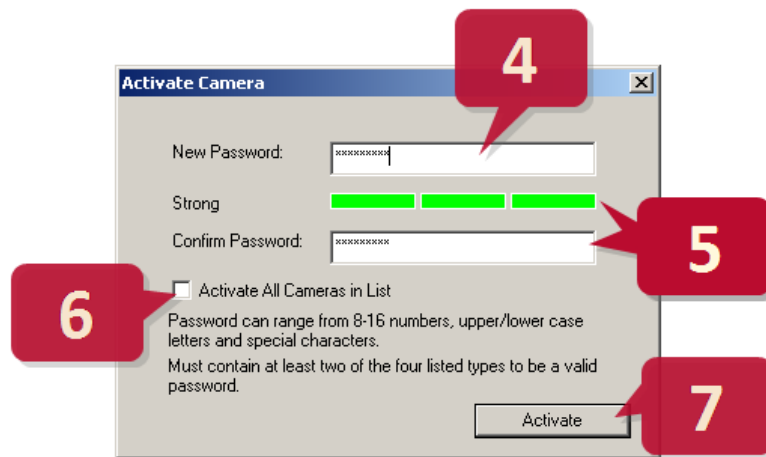
2 3xLOGIC Camera (VSXIP) Setup Utility - Camera Activation

To activate a camera, launch the 3xLOGIC Camera (VSXIP) Setup Utility (v9.50.0300 or later required) and follow the below instructions:

1. Click the **Detect Online Devices** button. A list of detected devices will deploy.
2. Select the desired camera from the list. Non-activated cameras will have *No* listed in their *Activated* column.



- Once selected, click the **Activate Camera** button. The Activate Camera dialogue will deploy.



- Enter a new password. Passwords can contain 8-16 numbers, uppercase and lowercase letters and special characters. The password must contain at least two of the four listed character types to be valid.
- Confirm the password in the available field. Refer to the password strength indicator to confirm your password is "Strong".
- (Optional) If you wish to activate all cameras in the utility's detected devices list, toggle **Activate All Cameras in List**. The password you entered will be applied to all non-activated cameras detected by the utility.
- Click **Activate** to complete the camera activation process.

The selected camera is now password secure, activated and ready for use.

3 Contact Information

If you require more information, or if you have any questions or concerns, please contact 3xLOGIC Engineering Support:

Email: support@3xlogic-eng.com

Online: www.3xlogic-eng.com