

## Tech Tip 170003

### VIGIL Server 7.50.0000 and Newer – Scavenger Threshold Setting

<b>Tech Tip #:</b>	170003
<b>Date:</b>	January 9 <sup>th</sup> , 2017
<b>Product Affected:</b>	VIGIL Server 7.50.0000 and Newer systems
<b>Purpose:</b>	This document is intended to outline the basic configuration and usage of the VIGIL Server Scavenger Threshold setting.

1	INTRODUCTION.....	1
2	CONFIGURING A VIGIL SCAVENGER THRESHOLD.....	1
3	CONTACT INFORMATION .....	2

#### 1 Introduction

When a configured media drive's available capacity falls under the allotted threshold, VIGIL will begin scavenging the oldest footage/data on the drive to free up storage space.

In VIGIL Server 7.5 and newer systems, users can configure a custom *Scavenger Threshold*. By configuring this setting, a VIGIL user can designate a custom threshold (configured as a percentage of a drive's maximum capacity) that when reached will trigger the VIGIL system to begin "scavenging" (identifying and removing) old footage and data to free up space on a drive.

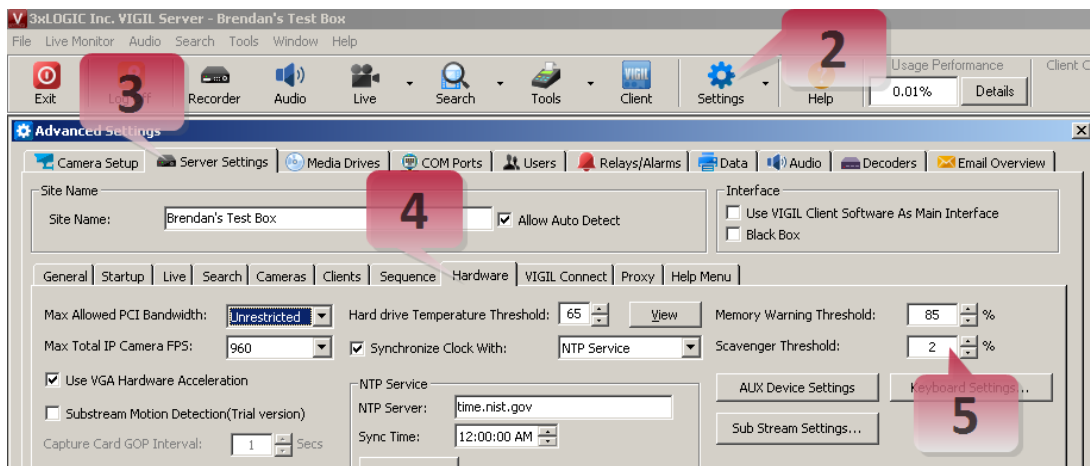


**Example:** If the Scavenger Threshold value is set to 10%, VIGIL will begin to scavenge footage whenever a media drive reaches 90% capacity.

#### 2 Configuring a VIGIL Scavenger Threshold

To configure a custom *Scavenger Threshold*:

1. Launch and login to VIGIL Server



2. Click on the **Settings** button.

3. Select the **Server Settings** tab.
4. Select the **Hardware** sub-tab.
5. Set a *Scavenger Threshold* value. The default setting is 2%.
6. Click **Apply** at the bottom of the Setting window to save your custom threshold percentage.

VIGIL Server will now begin scavenging footage/data whenever a media drive has met the configured *Scavenger Threshold*.

### **3 Contact Information**

If you require more information, or if you have any questions or concerns, please contact 3xLOGIC Support:

Email: [helpdesk@3xlogic.com](mailto:helpdesk@3xlogic.com)

Online: [www.3xlogic.com](http://www.3xlogic.com)